



## Flat 20 Fontana, 424-426 Walderslade Road, Walderslade, Kent, ME5 9LL

**\*\*AMAZING SPACE\*\*2 DOUBLE BEDROOMS\*\* SEMI OPEN PLAN LIVING\*\*BALCONY\*\*ALLOCATED PARKING\*\*MODERN DECOR. BUILT IN 2007. CALL TO BOOK YOUR VIEWING.**

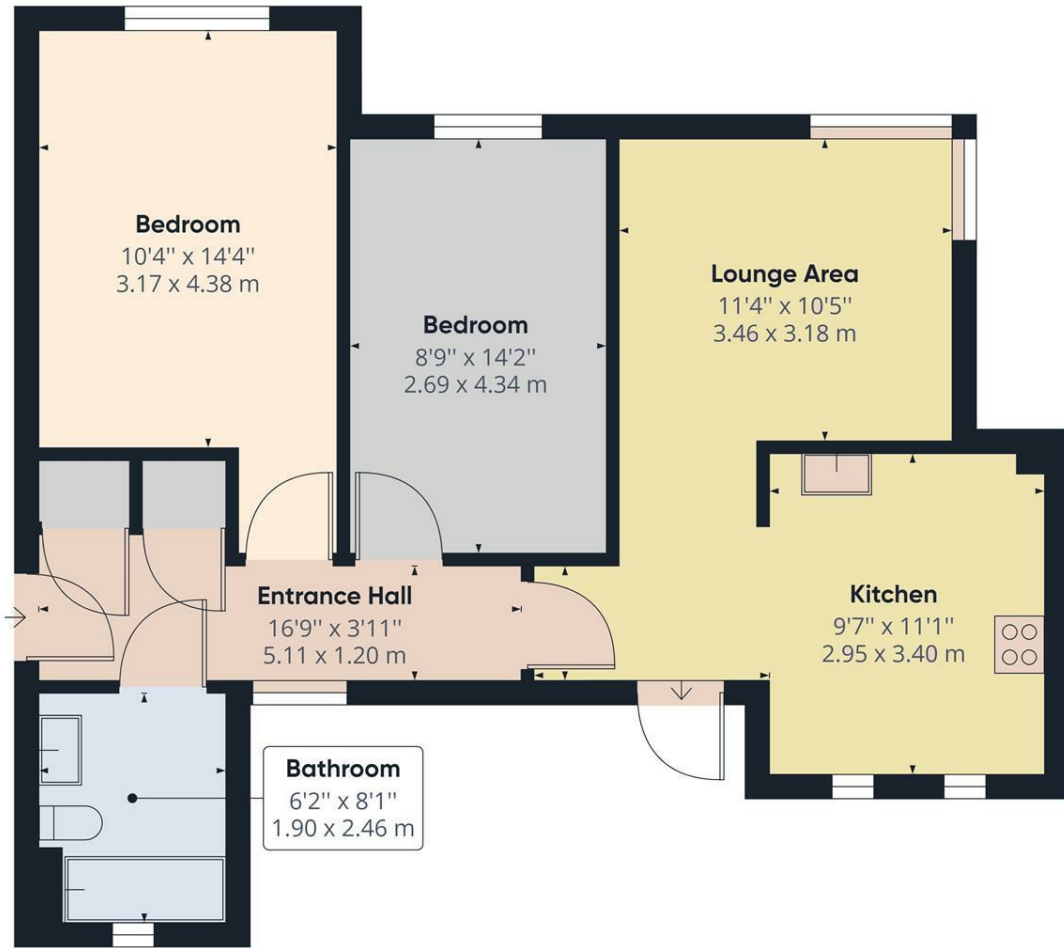
A fantastic two bedroom apartment which is deceptively large has just come available to the sales market and internal viewings are an absolute must. This is a perfect first purchase or rental investment.

The apartment is located on the top floor via a door entry system and has an allocated parking for one car. The large hallway offers access to all internal rooms and has an added benefit of a loft for storage. Both bedrooms are double rooms and the semi open plan style living and kitchen area are perfect for a modern feel. There is a good size balcony to the rear, the perfect spot for sitting outside. Walderslade is a large suburb in Kent to the south of Chatham and the property is situated in the heart of the village just next to the main shops. Be quick to book your appointment to view

Council tax band B. There are 108 years left remaining on the lease which expires in June 2132. Service charge and ground combined is currently £98 per month, reviewed annually.

- 2 DOUBLE BEDROOMS
- FITTED KITCHEN
- SEMI OPEN PLAN
- COUNCIL TAX BAND B
- PARKING SPACE
- BUILT IN 2007
- CLOSE TO AMENITIES
- SOUGHT AFTER VILLAGE LOCATION
- VIEWING ADVISED

**£220,000**



Approximate total area<sup>(1)</sup>  
 716.10 ft<sup>2</sup>  
 66.53 m<sup>2</sup>

(1) Excluding balconies and terraces

While every attempt has been made to ensure accuracy, all measurements are approximate, not to scale. This floor plan is for illustrative purposes only.

GIRAFFE360

